



KALHOUR TRADING COMPANY LLC.

Since 1981



COMPANY PROFILE

Kalhour Trading Company L.L.C. (KTCL) was established in the early 1980s and is one of the leading stockists and suppliers of Piping Materials such as Pipes, Butt Weld Fittings, Forged Fittings, Forged Flanges, Valves, Gaskets & Stud Bolts.

Over the past years, we have developed our stocks and clientele in the GCC in collaboration with major European & American manufacturers around the globe strongly supporting our organization with product support and special productions covering the complete range of piping materials.

We have exported all our products on a large scale to more than 50 countries and regions and our high-quality products and strong international reputation in industries related to the Oil, Gas, Petrochemical and Refineries are highly valued by foreign customers.

PIPES

Material

Carbon Steel, Stainless Steel, Alloy Steel, Nickel Alloys, Hastelloy, Inconel, Duplex / Super Duplex & other Austenitic Steel Grades.

Types

Seamless, Welded, ERW, EFW, SAW & LSAW with 2 Layer & 3 Layer PE Coating & Cement Lining.

Material Grades

A106 GR. B / A53 GR. B / API 5L GR B,
A 333 GR. 3 & GR. 6, SS A312 TP 304/304L,
TP316 / 316L, F321, API 5LX 42 upto X80 PSL1 & PSL2,
A335 P5, P11, P22 & P91.

Sizes

1/2" to 84" - varying with material Grades.

Schedules

SCH 10 Thru SCH XXS or Higher as per customer requirements.

Manufacturers Origin

Eastern / Western Europe, Japan, South Korea, Russia, Ukraine & USA.

Certification

EN 10204/3.1, Materials Conforming to NACE MR.01.75



FLANGES

Material: Carbon Steel, Stainless Steel, Alloy Steel, Nickel Alloys, Hastelloy, Inconel, Duplex / Super Duplex & other Austenic Steel Grades.

Material Grades: ASTM A 105 N, ASTM A 350 LF2 / LF3, F 304 / F304L, A182 F5, F11, F22, F91, F316/316L, F321, F347H, F51, ASTM A694 F42 upto X80, PN10, PN 16, 5K, 10K, 20K, 30K, 50K & API type 6A-6BX Flanges.

Size: 1/2" thru 84" and above for all grade materials, where 24" & above are available in ASME B16.47 Series A (MSS-SP-44) & Series B, (API 605), DIN/JIS/PN also available.

Types: Weld Neck, Blinds, Slip On, Threaded, Socket Weld, Orifice, Anchor. (RF, FF, RTJ) from Class 150 thru 2500 & API Flanges to API 6A type 6B, Duplex and Chrome Molly up to 10,000 PSI.

Manufacturers: West European / South Korea / USA

Certification : EN 10204/3.1, Materials Conforming to NACE MR.01.75



BOLTS & NUTS

Material: Carbon Steel, Stainless Steel, Alloy Steel, Nickel Alloys, Hastelloy, Inconel, Duplex / Super Duplex & other Austenic Steel Grades.

Material Grades: B7/2H, B7M / 2HM, L7 / GR/4, GR8/8m and other Stainless Steel Grades.

Coating: PTFE, Fluorocarbon coated

Type: Stud Bolts, Studs, Nuts, Anchor Washers, Eye Bolts, Screw, Cotter pin, Threaded Rod, Fine & Spares, Foundation I Bolt, J Bolt, L Bolt, U Bolt, Etc.

Manufacturers: West European, South Korea & U.S.A.

Certification: EN 10204/3.1, Materials Conforming to NACE MR.01.75



GASKETS

Material: Carbon Steel, Stainless Steel, Alloy Steel, Nickel Alloys, Hastelloy, Inconel, Duplex / Super Duplex & other Austenic Steel Grades.

Material Grades: 304, 316, Soft Iron & C.S.

Type: Spiral Wound, Ring Joint, OCT & OVAL Ring Joint, CAF, CNAF, EPDM, Viton, Neoprene Rubber in accordance to ASME B16.20

Manufacturers: West European & U.S.A.

Certification: EN 10204/3.1, Materials Conforming to NACE MR.01.75



SHIPBUILDING/MARINE/CONSTRUCTION/BOILER PLATES & BULB FLATS

KTCL supplies various steels for shipbuilding industries in accordance with the regulations of all important classification authorities such as (DNV, ABS, LR etc.)

Quality & Standards

Shipbuilding Plates: to grade A,B,D & E in mild steel.

Shipbuilding Plates: to Grade AH32/AH36/AH40/AH42/AH46 in high tensile Steel.

Shipbuilding Profiles: (BULB FLATS) to Grade A, B, AH32 and AH36.

Construction Plates: to Grade S235R, S235J0, S235J2 G3, S275JR, S355N, S355M, S A 283 GRB, C & D, ASTM A572 GR50 etc.

Boiler Plates: to Grade SA285 GRB & C, SA299, SA387 GR 11, CL2, SA387 GR 22 CL2, SA515 GR 60/65/70, SA516 GR 60/65/70.



VALVES

Material: Carbon Steel, Stainless Steel, Alloy Steel, Nickel Alloys, Hastelloy, Inconel, Duplex / Super Duplex & other Austenitic Steel Grades.

Types: Ball Valves, Gate Valves, Globe Valves, Check Valves, Butterfly Valves, Line break Valves, Safety relief valves, Choke Valves, Needle Valves, Control Valves & Actuators

Standards: in Accordance to API

Sizes: 1/2" to 84", #150-#2500 varying with material grades.

Body Materials: ASTM A216 WCB, WC6, WC7
ASTM A105, ASTM A182 F304/304L
ASTM A182 F316/316L, A351 CF3,
A351 CF3M, A351CF8, A351CF8M,
ASTM A182 F11, ASTM A182 F22, etc.



BUTT WELD FITTINGS

Material

Carbon Steel, Stainless Steel, Alloy Steel, Nickel Alloys, Hastelloy, Inconel, Duplex / Super Duplex & other Austenitic Steel Grades.

Material Grades

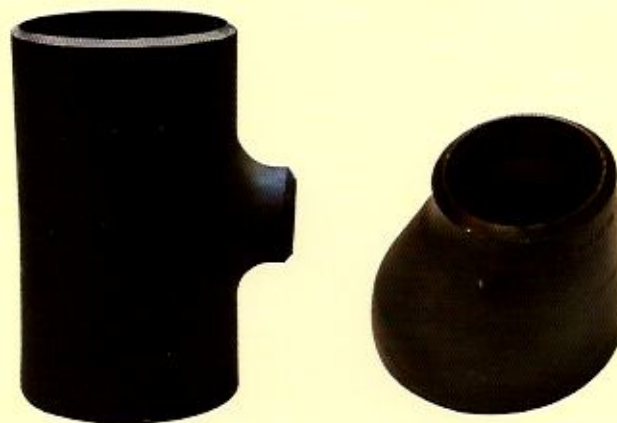
ASTM A 234 WPB, ASTM A 420, WPL3 / WPL6, ASTM A234 WP5, WP11, WP22, WP91, A403 304/304L, 316 / 316L, ASTM A860, WPHY 42 upto WPHY 80 / MSS-SP-75.

Sizes

1/2" to 84" - varying with material Grades.

Types

Elbows (L.R. & S.R) 45 / 90 & 180 Degrees, 1.5D, 3D, 5D Equal & Un Equal Tees, Concentric & Eccentric Reducers, Caps from SCH STD to SCH XXS or higher as per customer requirements.



FORGED FITTINGS

Material

Carbon Steel, Stainless Steel, Alloy Steel, Nickel Alloys, Hastelloy, Inconel, Duplex / Super Duplex & other Austenitic Steel Grades.

Types

Elbows (45 & 90) Degrees, Equal & Reducing Tees, Caps, Plugs, Bushings, Half & Full Couplings, O Lets, Swage Nipples, Hex Nipples. Etc.

Material Grades: ASTM A 105N, ASTM A 350 LF2 / LF3, SS A182 F 304/304L, 316 / 316L, F321, F5, F11, F22, F91, F42 to F80.

Sizes

1/2" Thru 6"

Class

3000 thru 9000

Types

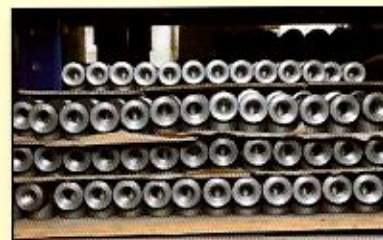
Socket Weld and Threaded

Manufacturers

West European, South Korea & U.S.A.

Certification

EN 10204/3.1, Materials Conforming to NACE MR.01.75



STOCKING FACILITIES

We have a wide range of stocks which is always expanding at our warehouse facility located in Al-Aweer, Dubai (U.A.E.). We stock materials of famous European, Korean and Japanese manufacturers, all certified by their respective Mills in accordance to relevant International Standards and all materials conform to Nace MR-01-75.

Our Stocks and Liaisons with reputed Manufacturers, Stockists and Suppliers from around the globe enables our experienced sales staff to offer and supply materials for complete project packages to our clients at most competitive prices and deliveries.

We are regular and potential suppliers to our customers in more than 50 countries, from over stocks and on forward delivery basis.



CONTACT

KALHOUR TRADING Co. (L.L.C)

Dubai - Head Office

Al Maktoum Street,
Baniyas Complex, 4th Floor Suite 409-B
Tel.: +971 4 2229927, Fax: +971 4 2229938,
P.O.Box: 29508, Dubai - United Arab Emirates
E-mail: kaltrdes@eim.ae
Web Site: <http://www.kalhour.com>

KALHOUR TRADING Co. (L.L.C)

Abu Dhabi Branch

Building No. M/26/22, Office No. 06/M/26/22
P.O. Box: 133225, Musaffah Industrial Area,
Abu Dhabi - UAE.
Tel.: +971 2 5512305, Fax: +971 2 5512304
E-mail: kaltrdes@eim.ae
Web Site: <http://www.kalhour.com>

THE EMERGENCY SUPPLIER